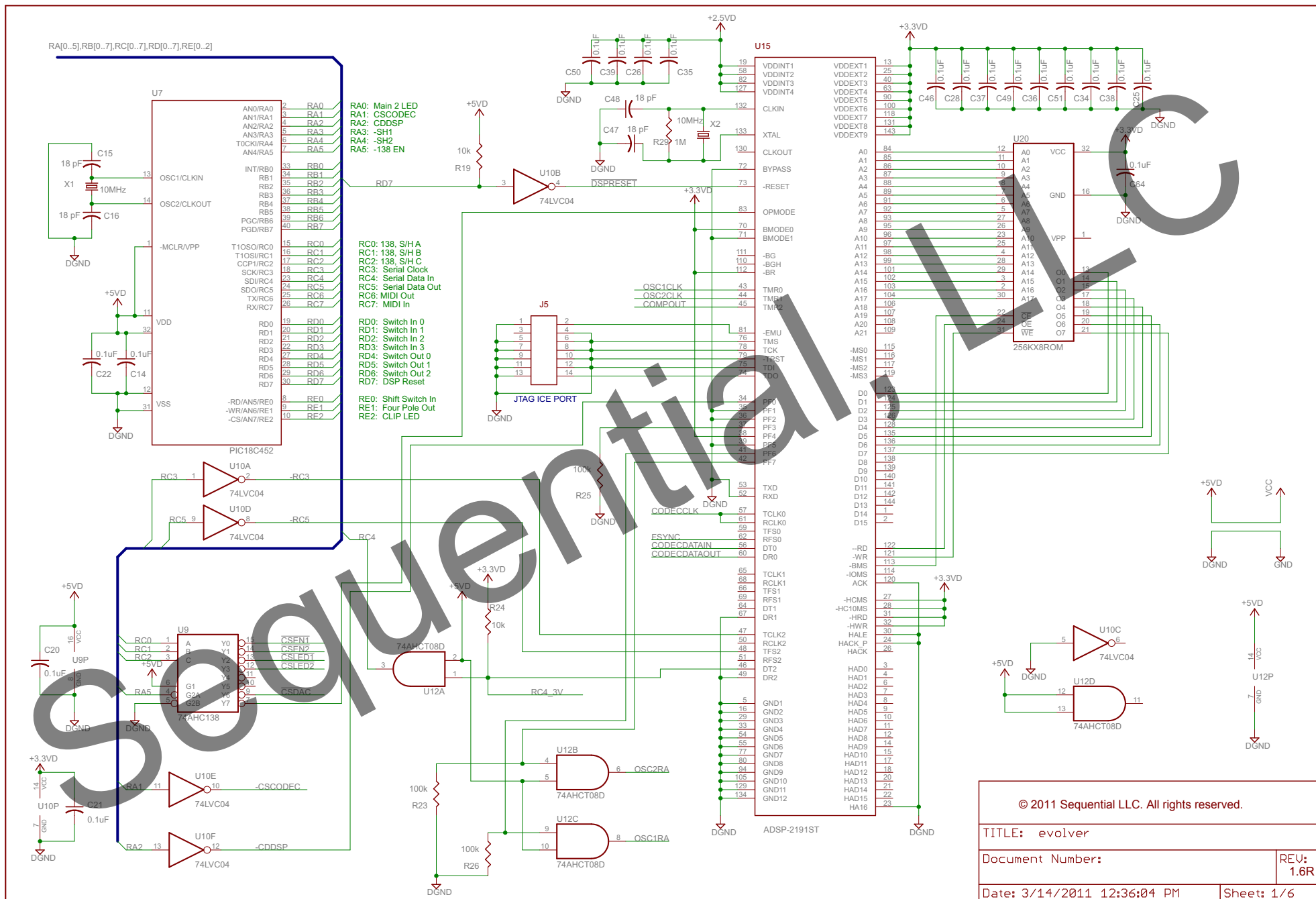


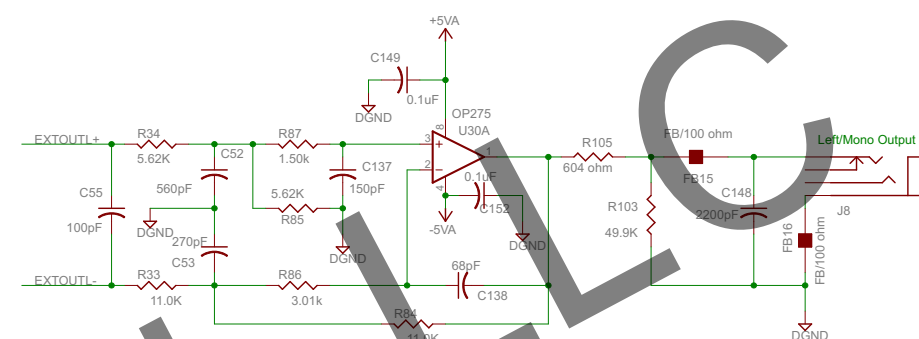
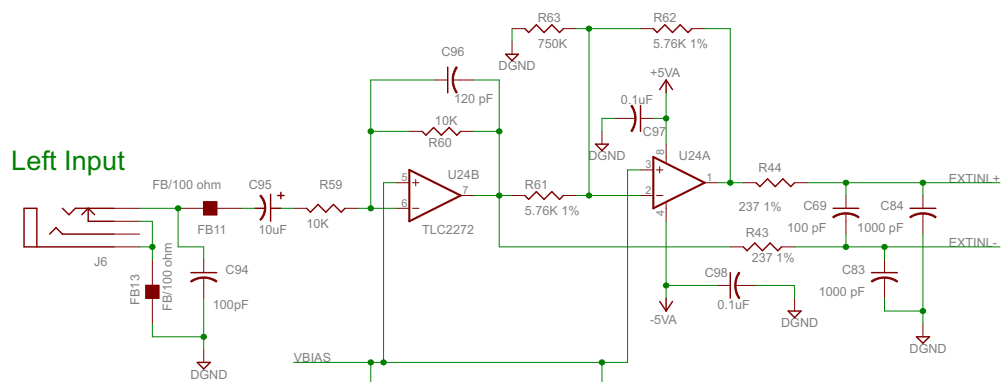
Notice:

The Evolver Desktop schematics are made available to you for repairing Sequential Evolver Desktop units and for troubleshooting purposes only. Any other use is strictly prohibited. No part of the Evolver Desktop schematics may be copied, reproduced, used for creating new products or derivative works, stored in a retrieval system of any nature, or transmitted, in any form or by any means, without the prior written permission of Sequential LLC, the copyright owner. If any unauthorised acts are carried out in relation to this copyright work, Sequential LLC reserves all rights to proceed with any available legal action or claim.

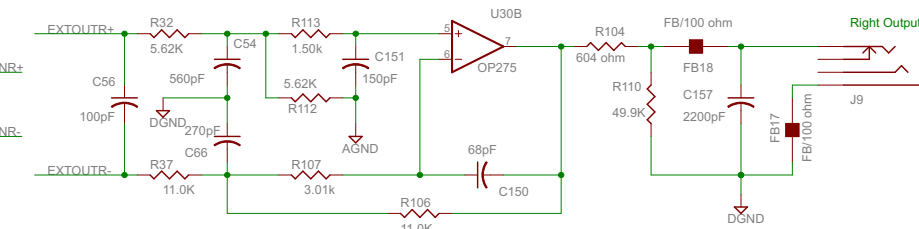
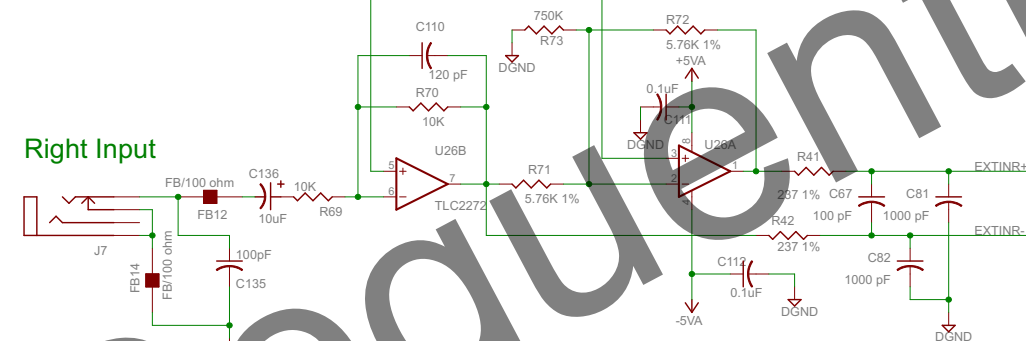
Sequential LLC shall not be liable for any damage, loss or injury of any kind and howsoever caused to equipment, persons, or other property due to repairs made by independent service providers or device owners.



Left Input



Right Input



© 2011 Sequential LLC. All rights reserved.

TITLE: evolver

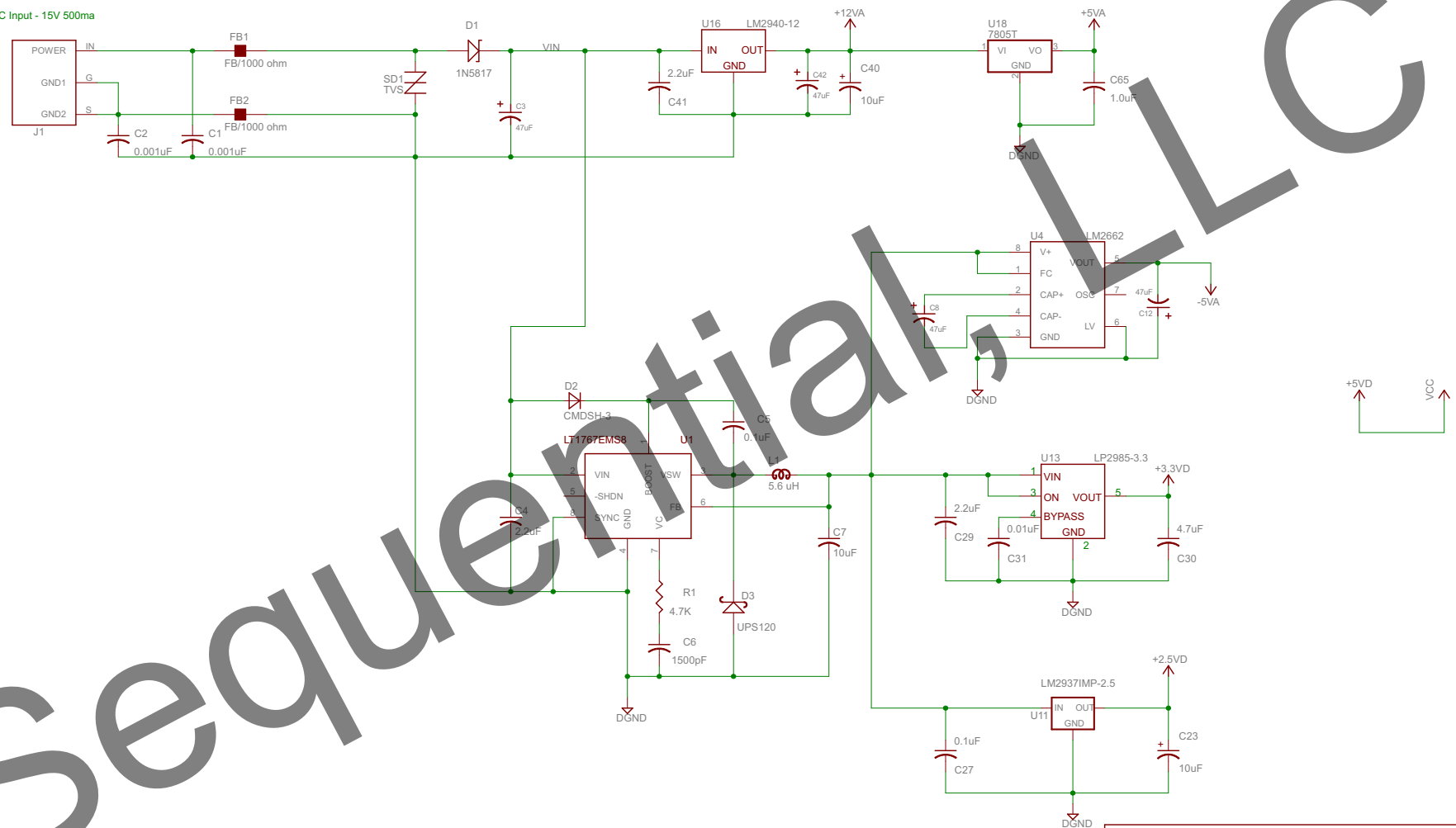
Document Number:

REV:
1.6R

Date: 3/14/2011 12:36:04 PM

Sheet: 4/6

DC Input - 15V 500ma



© 2011 Sequential LLC. All rights reserved.

TITLE: evolver

Document Number:

REV:
1.6R

Date: 3/14/2011 12:36:04 PM

Sheet: 6/6